

English Version:  
For use in Japan only

**COPIC**<sup>®</sup>

**358** colors  
copic sketch

**180** colors  
copic ciao

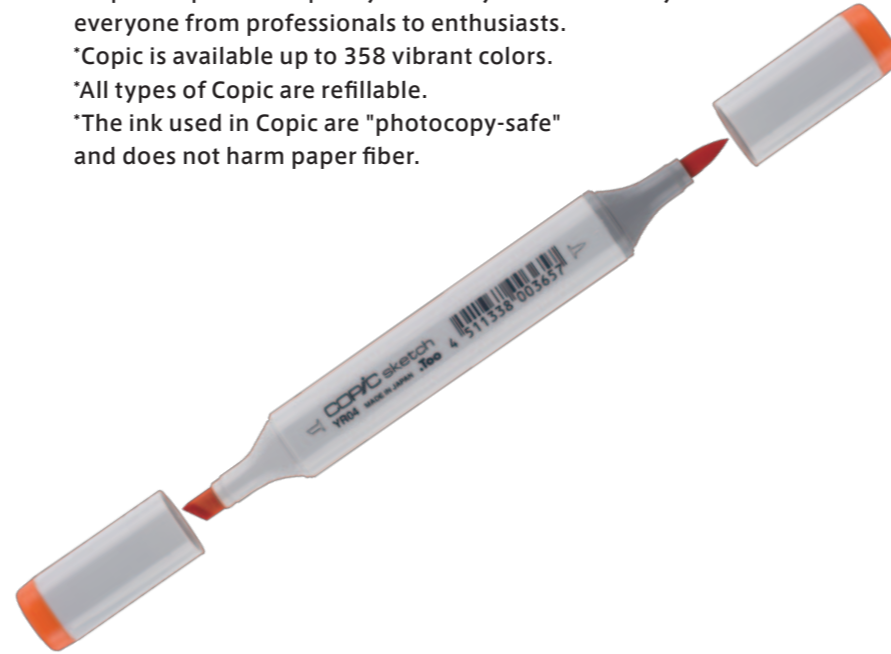
**214** colors  
copic classic



Updated: Mar 2018

# The highest quality markers

\*Copic is a premium quality marker system favored by everyone from professionals to enthusiasts.  
\*Copic is available up to 358 vibrant colors.  
\*All types of Copic are refillable.  
\*The ink used in Copic are "photocopy-safe" and does not harm paper fiber.



### IMPORTANT:

- Copic ink dries quickly. Always replace the cap after use.
- It is recommended to work with a piece of paper under your artwork to ensure the ink does not bleed through onto your workplace.
- Copic is long-life, economical marker system. All types of Copic are refillable, have replaceable nibs.

### CAUTION:

Due to a chemical reaction of the dye-based Copic ink with plasticizers contained in vinyl (such as PVC), color staining may occur. It's preferable to avoid putting up your artwork colored in Copic directly on the wallpaper.

**FAQ**

Visit FAQ page on Copic official website  
<https://copic.jp/support/#faq>

## Frequently Asked Questions

**Q Do you have any recommended type of Copic for beginners?**

For beginners, we absolutely recommend Copic Ciao marker. It's also good idea to purchase the well-balanced Ciao 24 colors set which contains all the basic colors.

**Q Sketch vs. Ciao**

Sketch is the standard marker and Ciao is the beginner marker in Copic family. Sketch has more colors and holds more ink. Ciao is less expensive, but they need to be refilled sooner and has the least color options. You can airbrush with Sketch but Ciao is not ABS (airbrushing system) compatible. Both have replacement nibs and the quality of ink is completely same.

**Q What points do you think I should pay attention to?**

Copic ink is alcohol-based. Penetration speed into the paper is fast and it may bleed through a certain type of paper. It is recommended to place a sheet of paper underneath your artwork to ensure the ink does not bleed through onto your workspace.

**Q Copic ink stays on my hands.**

Copic ink is dye ink. It takes a little time to remove dye stains from the skin completely. Try regular soap and warm water first to see how much of it you can get off. You may use cleansing milk, oil-based makeup remover or #0 Colorless Blender.

**Q I spilled Copic ink on my clothes.**

Copic ink is alcohol-based dye ink and cannot be easily removed from fabric. We strongly recommend that you seek the advice of the dry-cleaner's shop.

**Q Tell me the appropriate storage method.**

Direct sunlight and high temperatures should be avoided.

**Q How the Copic markers should be stored? Flat or vertical?**

Basically it would make no big difference whether you store your markers either upright or on their side as long as the ink is nearly-filled. In our pre-made sets, markers are placed with the Super Brush nib side up. However when the ink amount has decreased, we recommend you to keep Copic markers flat so that the ink saturates evenly on both nibs.

**Q Could you tell me the size of area I can color with a single marker?**

Below is the average number of B4 size (257mm x 364mm) paper when painting whole area evenly with Broad nib:

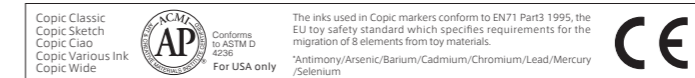
Sketch: Approx. 3.7 sheets    Classic: Approx. 5 sheets  
Ciao: Approx. 2.7 sheets    Wide: Approx. 9 sheets

**Q What is a difference between 100 Black and 110 Special Black?**

100 Black is a slightly bluish black which will fit with Cool Grays. On the other hand, 110 Black is a bit reddish and we can say that it's closer to "ink black" or "deep black" compared with 100, and will fit with the Neutral Grays. The difference between these two blacks is very subtle but the blending amount of dyestuffs is greater in 100 Black.

A comparison by type of Copic	COPIC sketch	COPIC ciao	COPIC classic	COPIC WIDE
Shape	Oval	Round	Square	Wide oval
Number of colors	358 colors	180 colors	214 colors	
Original Marker (empty marker without ink)	○	×	○	○
Refillable with Various Ink	○	○	○	○
The number of times that one bottle can refill	Applox.13 times	Applox.17 times	Applox.10 times	Applox.7 times
Rough indication amount per refill	Applox.1.8ml	Applox.1.4ml	Applox.2.5ml	Applox.3.5ml
Refill amount for Copic Original (empty marker)	Applox.3ml		Applox.4ml	Applox.6ml
Nib replacement	○	○	○	○
Types of nib (★= Standard nib)	★Super Brush ★Medium Broad Sketch Fine	★Super Brush ★Medium Broad	★Standard Fine Super Fine Semi Broad Calligraphy 3mm ★Standard Broad Soft Broad Calligraphy 5mm Round Brush	★Extra Broad
Compatibility with Copic Airbrushing System (ABS)	○	×	○	×
Price	JPY 380 + tax	JPY 250 + tax	JPY 380 + tax	JPY 380 + tax

Twitter @COPIC\_Official Instagram @COPIC\_Official YouTube @COPIC\_Official channel



©Copyright © 2018 Too Corporation All rights reserved.  
\*The information in this manual is as of Mar 2018. It may change without prior notice for various reasons.  
\*As a manufacturer we have responsibility in the quality of the product that we produce. If a manufacturing defect is found, we will be happy to replace your product.  
\*This catalog is for domestic use. Indicated prices are applicable within Japan only.

**Too Marker Products Inc.**  
TOC Bldg. 8F, 7-22-17 Nishi-Gotanda,  
Shinagawa-ku, Tokyo 141-0031, Japan  
Tel (+81) 3-5719-2655

**Too Marker Products Inc.**  
<https://copic.jp>

**.Too**







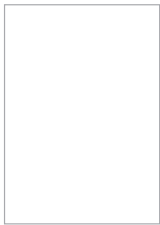
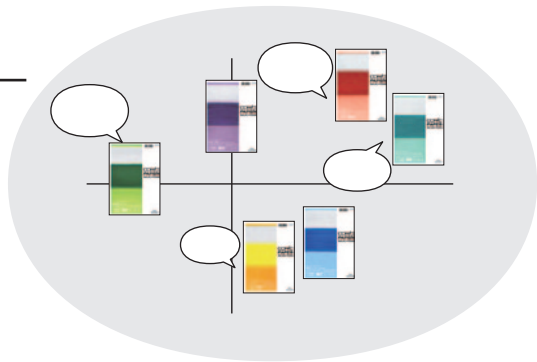








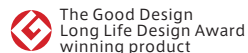




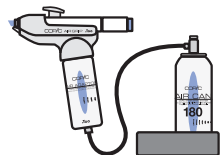
# Copic Airbrushing System (ABS)

An innovative Copic Airbrushing System (ABS) allows you to easily obtain airbrush effects, and color on a wide variety of surfaces and textures. Simply snap a Sketch or Classic marker into the system and you are ready to go.

**Simple airbrushing system** ※Copic Ciao cannot be used with ABS.



※Production and consumption of chlorofluorocarbon HFC 134a are being discontinued under the Montreal Protocol on Substances that Deplete the Ozone Layer. Accordingly, the sale of Air Can (and the products contain Air Can) will end when all the stock has been sold.  
 ※In early summer of 2018, the Air Can will be replaced with the 1234ze gas with zero ozone layer depletion and very low global warming potential.



Standard airbrushing system using Air Can

●ABS-1N ... JPY 5,200 + tax

Includes: ※On Sale while stocks last  
 Air Grip, Air Adapter, Air Hose, Air Can 180, Air Can holder



ABS-1N

※Parts are modular and will adapt for compressor compatibility.  
 ※Air Grip can also be connected to D60 Air Can directly.



Smallest and simplest airbrushing system

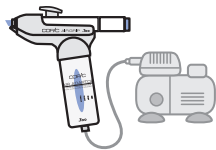
●ABS-2 ... JPY 2,100 + tax

Includes: Air Grip, Air Can D60



ABS-2

※On sale while distribution stocks last  
 ※The Air Can will be replaced with the 1234ze gas



ABS used in connection to air compressor

●ABS-3 ... JPY 2,500 + tax

Includes: Air Grip, Air Adaptor



ABS-3

※Compressor and air hose are sold separately  
 ※Air pressure must be maintained around 0.3MPa.  
 ※To connect with Air Adaptor, use G1/8 (PF1/8) air hose.

## [Single parts]



●Air Grip ... JPY 1,500 + tax



●Air Adapter ... JPY 1,000 + tax

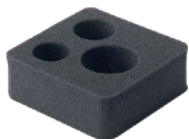


●Air Hose ... JPY 1,900 + tax



●Air Can 180 ... JPY 850 + tax  
 ※On Sale while stocks last

●Air Can D60 ... JPY 600 + tax  
 ※On sale while distribution stocks last  
 ※The Air Can will be replaced with the 1234ze gas



●Air Can holder ... JPY 380 + tax



**CAUTION**

◎Use in an area with good air circulation and wear a mask when you work.  
 ◎Keep away from open flame. ◎To attach Air Grip to Air Can, use the D60.  
 ◎Do not spray on people or animals.

# Copic Opaque White

Copic Opaque White has good opacifying properties and provides highlights and details easier than ever. This thick white paint won't bleed into the base color and allows for sharp expression. Great for adding the final touches to your artwork.

※Do not apply colors on top of Opaque White.

●30ml (c.c.) ... JPY 1,250 + tax ●7ml (c.c.) with brush ... JPY 600 + tax



## Storages

●Copic Carrying Case ... JPY 7,200 + tax

Portable case big enough to hold the entire Copic color spectrum. Six removable carry cups fit in the hard shell case.

Holding up to:  
 Approx. 380pcs of Copic Sketch  
 Approx. 430pcs of Copic Ciao  
 Approx. 250pcs of Copic Classic  
 Dimensions: 43×25×17.5cm



●Copic Carrying Pouch ... JPY 1,600 + tax

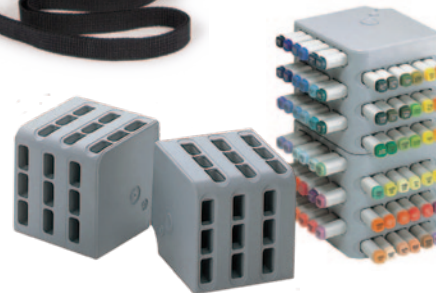
This handy carrying pouch with removable shoulder strap makes transporting your Copic collection easy. Detachable divider and shoulder strap are attached.

Holding up to:  
 48pcs of Copic Sketch (50pcs without divider)  
 57pcs of Copic Ciao (58pcs without divider)  
 34pcs of Copic Classic (35pcs without divider)  
 Dimensions: Approx. 120×160mm



●Wire Stand ... JPY 4,300 + tax

This metal wire stand will help you to organize and display your markers stylish. It holds up to 72 Classic/Sketch markers.



●Block Stand ... JPY 1,800 + tax

This expandable Block Stand will stand vertically or horizontally. Each block holds up to 36 Classic markers.

# Copic Plastic Color Solid Chips Set

Copic Plastic Color Solid Chip is an innovative product that facilitates color communication in a variety of occasions. 288 colors were carefully selected so that you can select colors intuitively.

JPY 48,000 + tax

